

PRELIMINARY PLAN DATE:

MARCH 26, 2008
 MARCH 28, 2008
 APRIL 1, 2008
 APRIL 3, 2008
 APRIL 8, 2008
 APRIL 16, 2008
 APRIL 18, 2008
 APRIL 21, 2008
 APRIL 24, 2008
 APRIL 28, 2008

410 Water Tower Court
 Watertown, WI 53094
 Phone: (920) 261-1682
 Fax: (920) 261-1321
 www.maasbrothers.com

SINCE 1922
MAASBROTHERS CONSTRUCTION
 CO., INC.

EXCEL ENGINEERING INC.
 PHONE: (920) 826-9800
 FAX: (920) 826-9801
 100 CAMELOT DRIVE
 FOND DU LAC, WI 54605

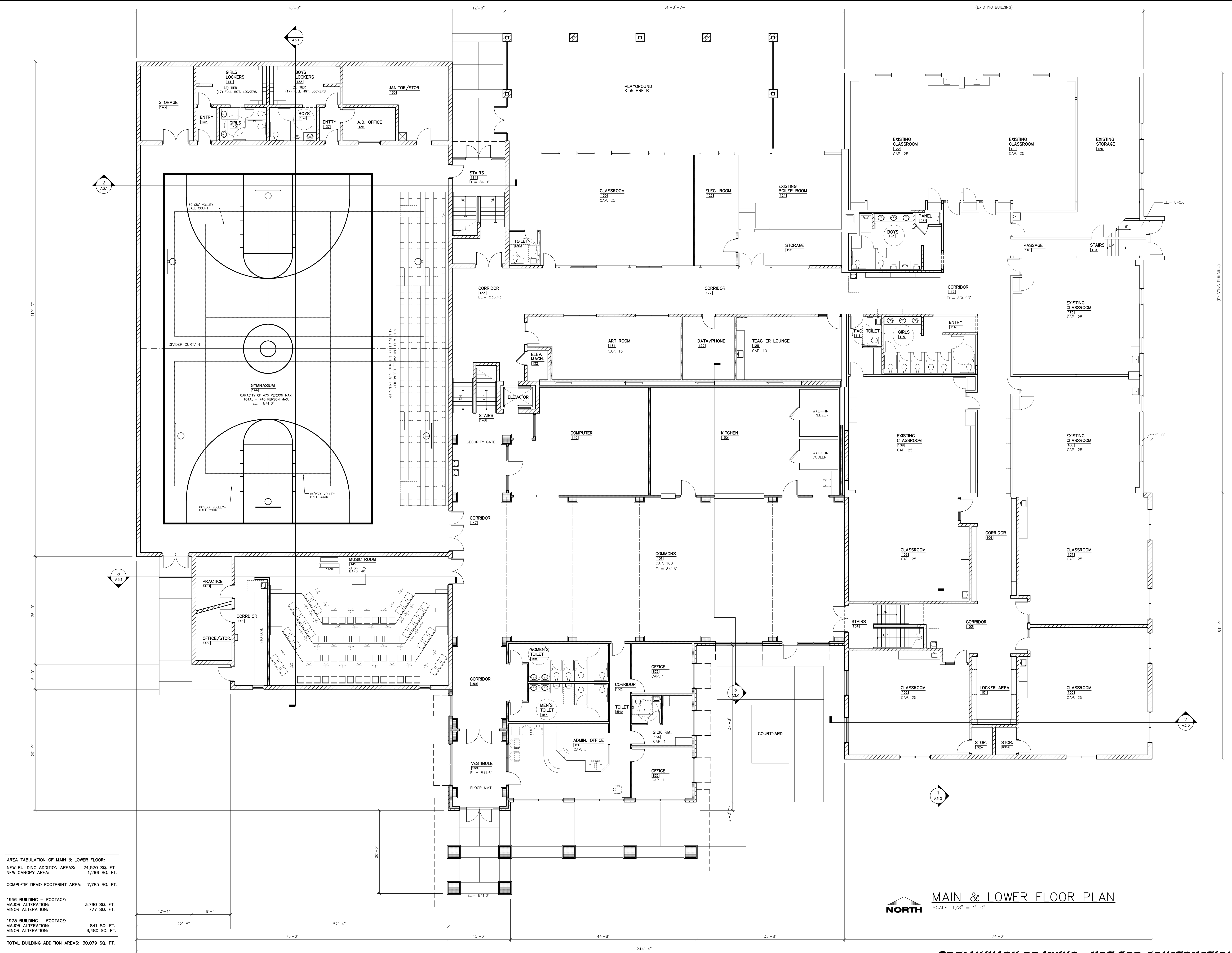
OWNER:
 ST. MARK'S LUTHERAN SCHOOL
 705 E. CADY STREET
 WATERTOWN, WI 53094

PROJECT:
 BUILDING ADDITION FOR:
 ST. MARK'S LUTHERAN SCHOOL
 705 E. CADY STREET
 WATERTOWN, WI 53094

DATE:
 DESIGN NO.:
 803110

SHEET

A1.0



AREA TABULATION OF MAIN & LOWER FLOOR:

NEW BUILDING ADDITION AREAS:	24,570 SQ. FT.
NEW CANOPY AREA:	1,266 SQ. FT.
COMPLETE DEMO FOOTPRINT AREA:	7,785 SQ. FT.
1956 BUILDING - FOOTAGE:	
MAJOR ALTERATION:	3,790 SQ. FT.
MINOR ALTERATION:	777 SQ. FT.
1973 BUILDING - FOOTAGE:	
MAJOR ALTERATION:	841 SQ. FT.
MINOR ALTERATION:	6,480 SQ. FT.
TOTAL BUILDING ADDITION AREAS:	30,079 SQ. FT.

MAIN & LOWER FLOOR PLAN
 SCALE: 1/8" = 1'-0"

PRELIMINARY DRAWING - NOT FOR CONSTRUCTION

2008 © EXCEL ENGINEERING INC.